

# MONTHLY MEMBERSHIP PROGRESS REPORT

LOCATION INDIA

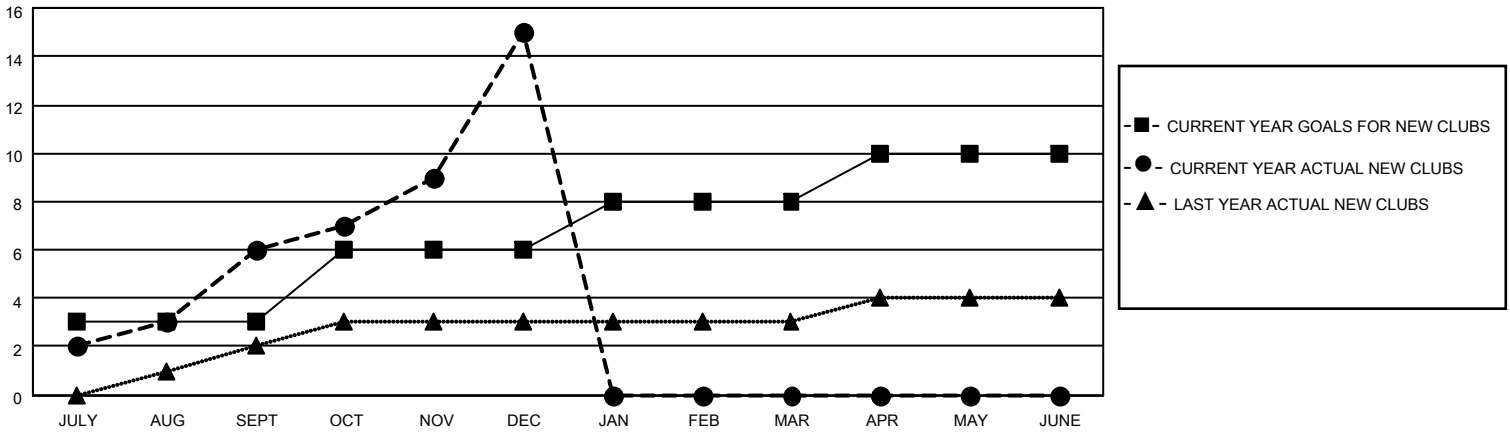
District 321 F

Results as of: 12/31/2020

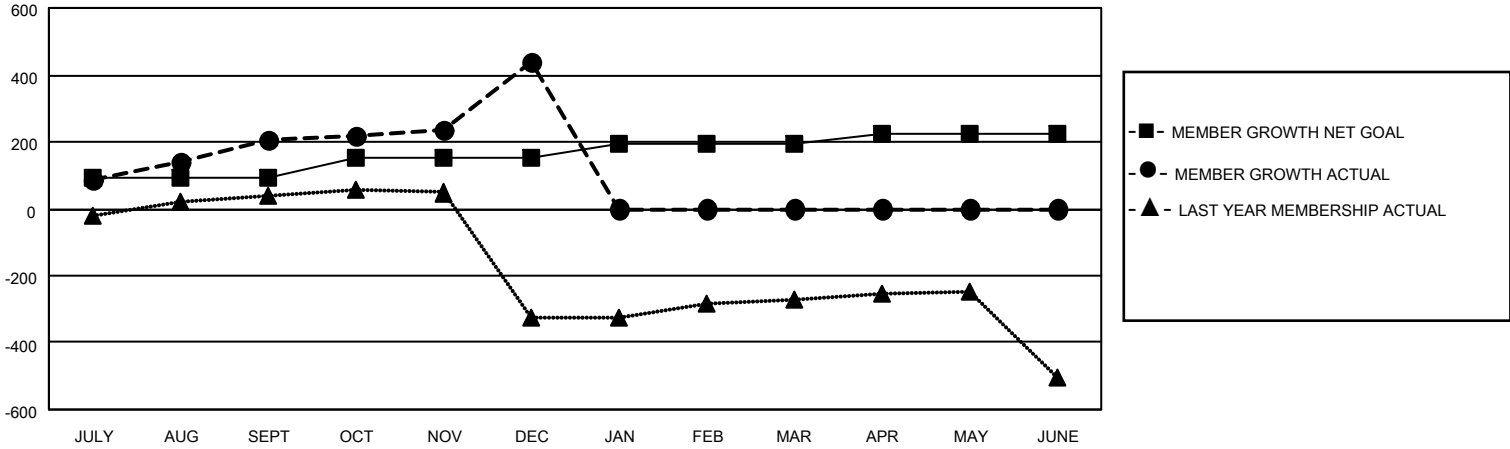
Clubs			
RESULTS FOR 2020-2021			
QUARTER	NEW CLUB GOAL	NEW CLUBS	DROPPED CLUBS
JULY/AUG/SEPT	3	6	0
OCT/NOV/DEC	3	9	0
JAN/FEB/MAR	2	0	0
APR/MAY/JUNE	2	0	0

Members			
RESULTS FOR 2020-2021			
QUARTER	MEMBER GROWTH NET GOAL	MEMBER GROWTH ACTUAL	DROPPED MEMBERS ACTUAL (including transfers)
JULY/AUG/SEPT	90	337	80
OCT/NOV/DEC	60	403	155
JAN/FEB/MAR	45	0	0
APR/MAY/JUNE	30	0	0

**GOALS AND ACTUAL NEW CLUBS CUMULATIVE**



**GOALS AND ACTUAL MEMBERS CUMULATIVE**



DROPPED CLUBS: 0	72 CLUBS OF 149 ADDED 1 OR MORE NEW MEMBERS	<u>GENDER DISTRIBUTION</u> MALE 3,613 (87.42%) FEMALE 520 (12.58%)
<u>DROPPED MEMBERS</u> DECEASED 14 CLUB CANCELLED 0 OTHER 221 TOTAL 235	<a href="#">CLICK HERE FOR CUMULATIVE MEMBERSHIP DATA</a>	TOTAL FAMILY UNIT MEMBERS 1,225 FAMILY MEMBERS PAYING HALF DUES 787